

VIEW
SWIM
ROOFTOP

EXTELL
SUN DECK
68 STORIES
720 FEET

KPF^{ROOFTOP DINING}
KATHERINE
NEWMAN
DESIGN INT.

CYCLING STUDIO
PILATES STUDIO
CARDIO & WEIGHT TRAINING

ROCK CLIMBING
WALL & YOGA STUDIO
MEN'S & WOMEN'S LOCKER ROOMS

THE PARK LOUNGE
CHEF'S KITCHEN
SCREENING ROOM

WINE ROOM
PRIVATE STUDY
GAME LOUNGE

CHILDREN'S PLAYROOM
FOREST ADVENTURE
GARDEN ROOM

BBQ GRILLS
AL FRESCO DINING
FIRE PIT TERRACE

PUTTING GREEN MEADOW WALK
THE RETREAT
CONCIERGE

DOORMAN MAIL ROOM
DRY CLEANING VALET
BIKE STORAGE

PACKAGE ROOM
REFRIGERATED
STORAGE ROOM

SQUASH/BASKETBALL COURT
65 FT. SALT-
WATER POOL

HOT TUB SAUNA
MEN'S STEAM ROOM
WOMEN'S STEAM ROOM

LAUNDRY ROOM
PET SPA STORAGE
STROLLER VALET

40,000 SQ FT
OF AMENITIES
WILLOUGHBY

SQUARE PARK

BROOKLYN
POINT

ALAMO^{DRAMATIQUE CINEMA} Century 21[®] HAN DYNASTY

TRADER JOE'S

TARGET^{two tablespoons} PAIN D'AVIGNON DeKALB

FORAGERS Bunker KATZ'S DELICATESSEN

BUNSMITH^{areperia} AREPA LADY^{colombiana} AMPLE HILLS^{creanest}

fly^{denmark} tiger^{ice cream} Fortuna^{cones} FLETCHERS^{wooden w. barrels}

MTA Long Island Rail Road A C G 4 5 R 2 3 B N Q

BROOKLYN
POINT

TABLE OF CONTENTS

03	BROOKLYN POINT: YOUR GATEWAY TO BROOKLYN
	5. Architecture by KPF
	7. A Parkside Arrival

08	A CURATED AESTHETIC: KATHERINE NEWMAN DESIGN
	10. Design-Driven Interiors: The Lobby
	12. Residential Luxury
	14. The Master Bedroom
	17. The Master Bathroom
	19. The Extell Choice

20	SUNSET VIEWS
	22. Framing the Skyline

27	AMENITIES FOR EVERYONE
	SOCIAL & ENTERTAINMENT
	28. Park Lounge
	31. Park Bar, Fireside Retreat, A Desk Like No Other
	CULINARY
	32. Chef's Kitchen
	34. Wine Library
	37. Dining Al Fresco
	PLAYFUL
	38. Game Room
	40. Children's Playroom
	42. Forest Adventure
	HEALTH & WELLNESS
	44. Fitness Center
	47. Climbing in the Clouds
	48. Indoor Pool

50	ROOFTOP RETREAT
----	------------------------

52	AROUND BROOKLYN POINT
	52. Subway Access: Everywhere You Want to Go
	53. City Point: Everywhere You Want to Be
	55. DeKalb Market
	56. Around Brooklyn Point: Map

60	FEATURES & FINISHES
----	--------------------------------

62	TEAM
----	-------------



COBBLE
HILL

BOERUM
HILL

CITY
POINT

DOWNTOWN
BROOKLYN

BROOKLYN
HEIGHTS

DUMBO

FORT GREENE

—
YOUR GATEWAY TO BROOKLYN

THE BEST OF BROOKLYN FROM EVERY POINT

Extell Development Company presents Brooklyn Point, a new standard of luxury living in Downtown Brooklyn. Designed by world-renowned architectural firm Kohn Pedersen Fox (KPF), the soaring, 720-foot-tall tower features a sculptural façade with oversized windows that frame spectacular views of the Manhattan skyline, waterways, and parks. The 68-story tower includes a selection of studio to three bedroom luxury residences and over 40,000 square feet of indoor and outdoor amenities. Brooklyn Point will be the first for-sale residential property at City Point — the largest food, shopping, and entertainment destination in Brooklyn.



A SCULPTURAL STATEMENT

ARCHITECTURE BY KPF

Conceiving the structure as the gateway to Brooklyn, Kohn Pedersen Fox approached the design of the façade as a relief sculpture, embracing a Bertoia screen as the source of inspiration. Double-height frames emphasize the proportions of the tower while their angled geometry creates an interplay between light and shadow.

—
WELCOME HOME

The rhythmic sculptural vocabulary of the façade is echoed in the design of the custom-illuminated marquee. The double-height lobby, adjacent to the new Willoughby Square Park, is attended 24 hours a day. The full-service building includes every imaginable convenience, from a stroller valet to booking your courtside tickets to the Nets game.

A PARKSIDE ARRIVAL



—
A CURATED AESTHETIC

KATHERINE NEWMAN

Acclaimed firm Katherine Newman Design (KND) composed both the residential and amenity spaces throughout Brooklyn Point. Named a three-time “AD 100” Interior Design Firm by Architectural Digest, KND creates highly customized and meticulously crafted environments. KND has applied the same detail-oriented approach for which it is known in its ultra-luxury single-family homes to each residence at Brooklyn Point.

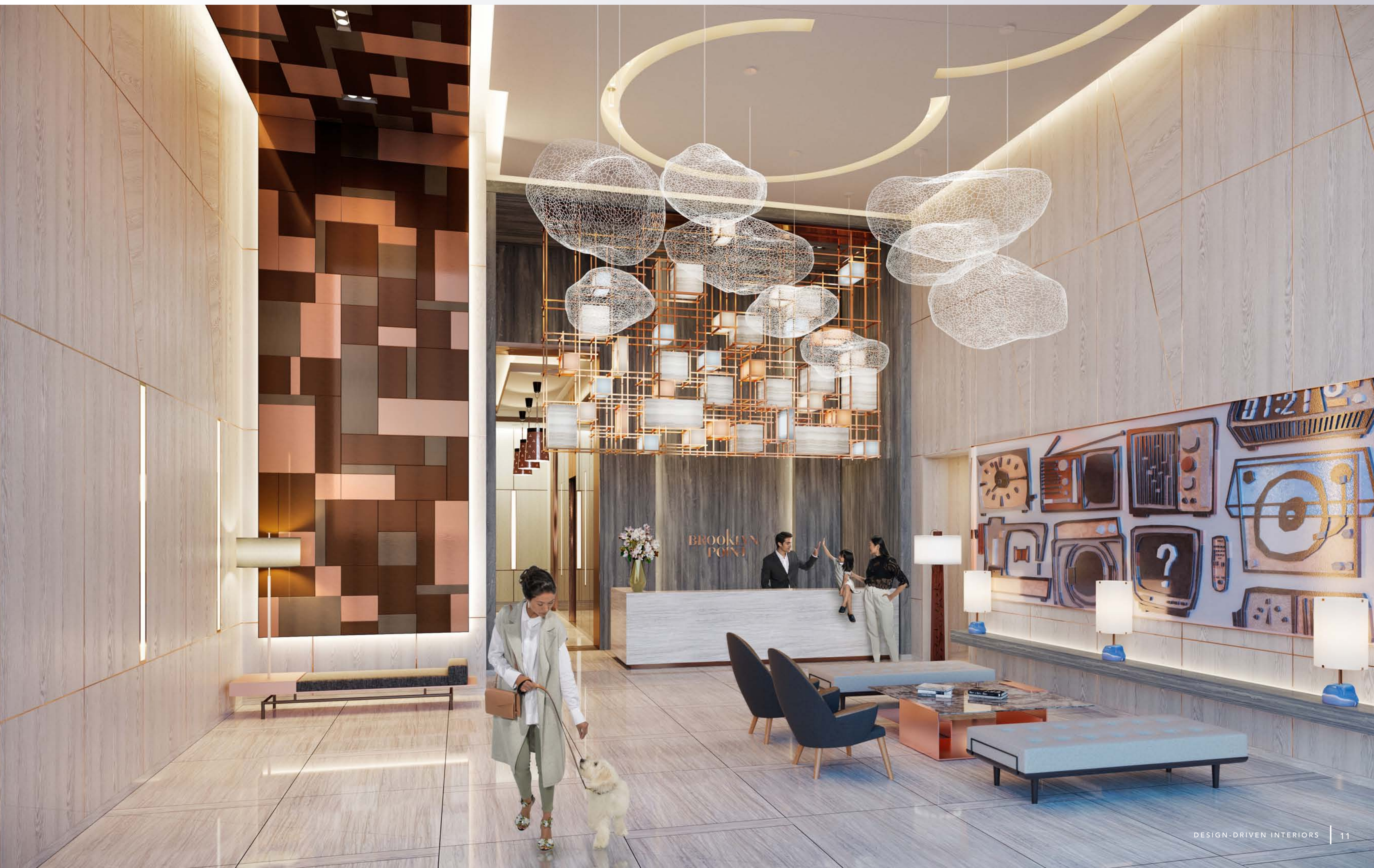
KND juxtaposes unexpected elements to create a truly original design. The firm is influenced by the works of American and European midcentury icons, and each detail is formulated to contribute to an artisanal aesthetic.



KATHERINE NEWMAN

ECLECTICALLY STYLISH

Striking, airy, and playful, the gracious double-height lobby features imported marble floors and light-stained, cerused oak walls with copper inlays. A suspended light sculpture positioned over the concierge desk is inspired by Bertoia's panel sculptures of the 1950s and includes custom pull-rod glass. The eclectic and artful furniture selection is complemented by a custom ceramic art installation inspired by the palette of pop art icon Roy Lichtenstein. Suspended cloud-form sculptures reference Ruth Asawa's crocheted wire sculptures of the '50s, introducing organic form to a geometric space.



—
A NEW VANGUARD OF

RESIDENTIAL LUXURY

The interiors at Brooklyn Point are as unique and spectacular as the views. Floor-to-ceiling glass frames the stunning views and fills each home with light. Every floor plan was meticulously designed to maximize space and functionality. Katherine Newman Design has curated each home with a selection of refined finishes, including imported stones and custom millwork.



SERENITY ABOVE IT ALL
MASTER BEDROOMS

The graciously proportioned master bedroom suites are designed as tranquil retreats. Walls of glass create a backdrop of cinematic views. Walk-in closets offer ample storage, and the en suite master bathrooms are luxuriously detailed.

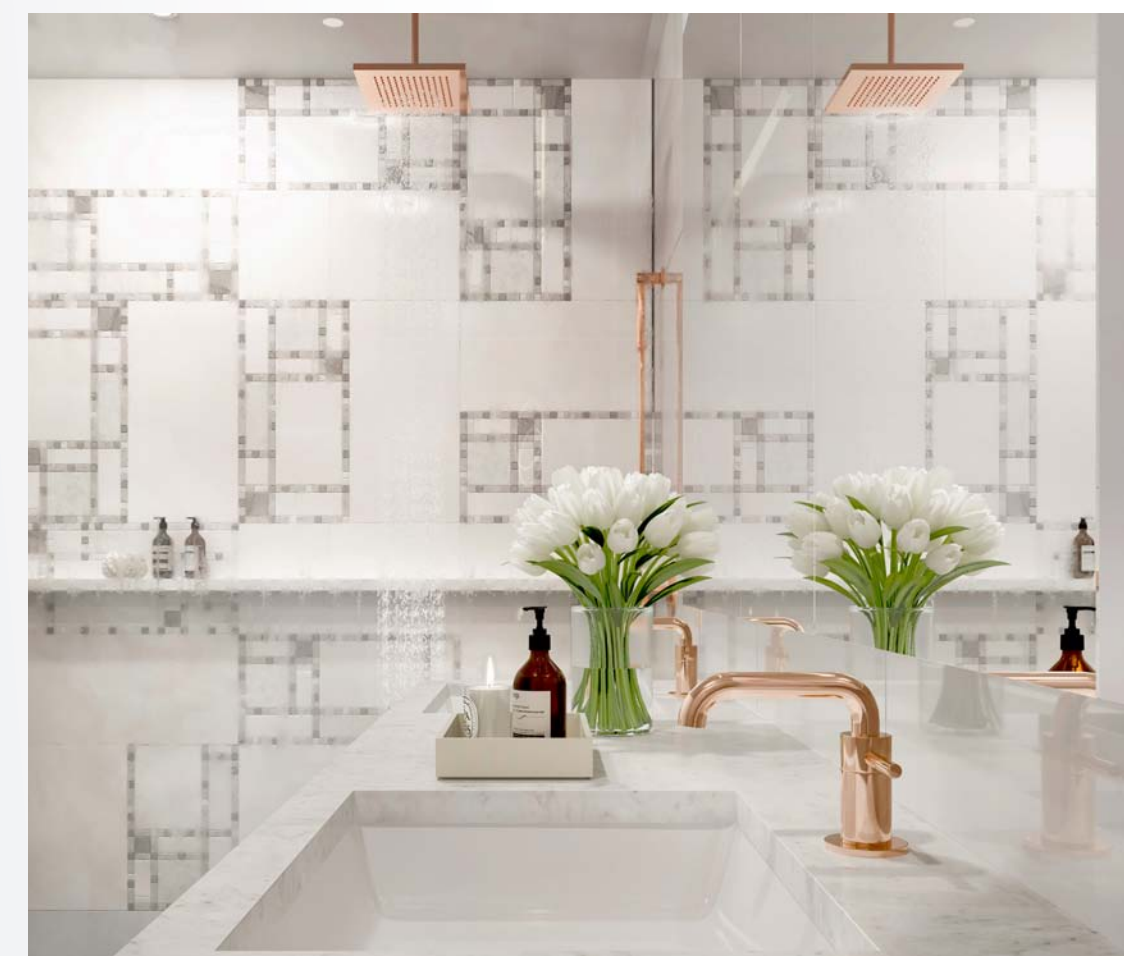




TRANQUILITY AWAITS

THE MASTER BATHROOMS

The master bathrooms feature unique mosaic walls that incorporate imported stones in various sizes. A custom-stained white oak vanity is finished with marble countertops and Waterworks satin copper fixtures. The Extell commitment to quality and craftsmanship is evidenced by the radiant floor heating, custom integrated glass medicine cabinet, hardware, pendant light, and the illuminated makeup mirror detailed in a satin copper finish.

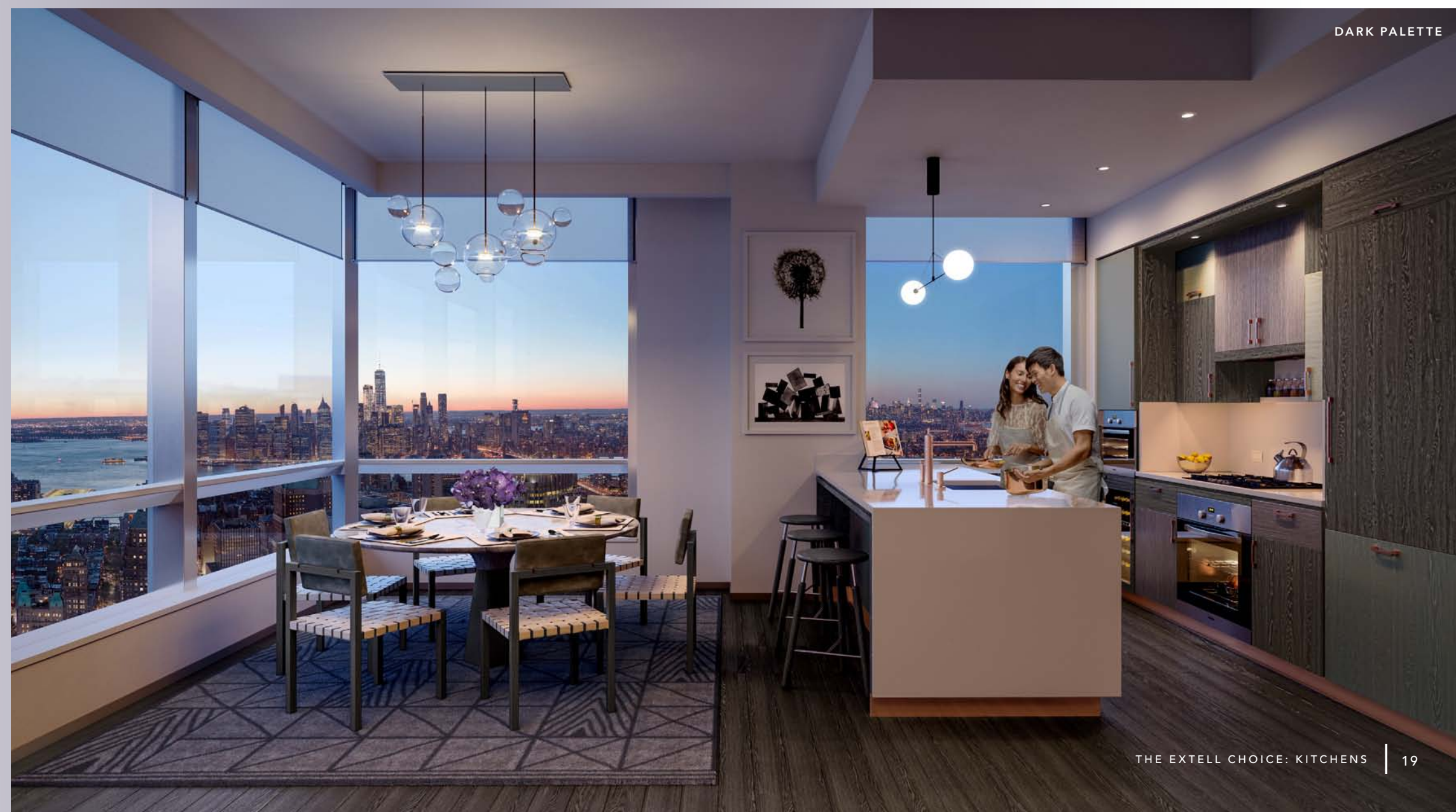




LIGHT PALETTE

LIGHT OR DARK PALETTE

Katherine Newman Design has detailed each kitchen with custom white oak millwork in varying colors and grain directions paired with white quartz countertops and custom copper hardware. All kitchens feature a premium Miele integrated appliance package including refrigerator/freezer, gas cooktop, convection oven, speed oven, and dishwasher. Select residences feature a built-in whole-bean coffee system and integrated Sub-Zero wine refrigerator. The open kitchens seamlessly connect to the spacious living rooms.



DARK PALETTE

THE EXTELL CHOICE KITCHENS

The signature Extell Choice provides owners the rare opportunity to select from a light or dark palette of finishes for custom kitchen cabinetry and white oak wood flooring.

—
THE BEST VIEWS OF MANHATTAN

SUNSET VIEWS

Perfectly positioned, Brooklyn Point offers an unprecedented vantage point of Manhattan from Downtown to Midtown. The glow from the New York Harbor and East River reflects New York's most iconic landmarks.



FRAMING THE

SKYLINE





FIRESIDE RETREAT



FIRE PIT



GAME ROOM



CHEF'S KITCHEN



ROOFTOP INFINITY POOL



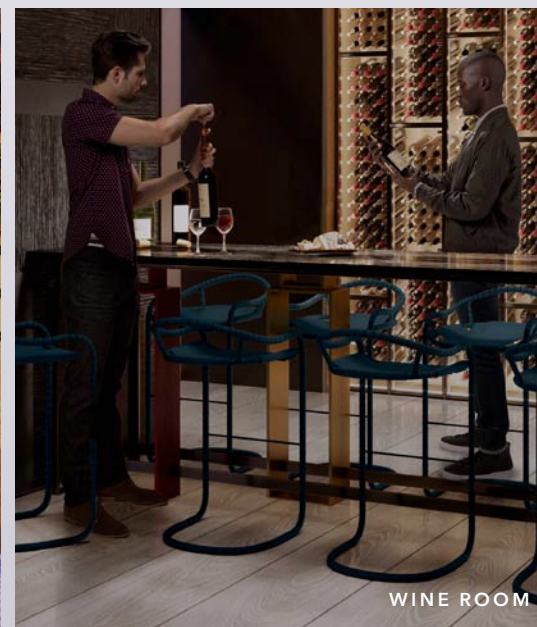
INDOOR SALTWATER POOL & HOT TUB



YOGA AND ROCK CLIMBING STUDIO



CHILDREN'S FOREST ADVENTURE



WINE ROOM



CARDIO & WEIGHT TRAINING CENTER



CHILDREN'S INDOOR PLAYROOM



TERRACE GRILL

40,000 SQUARE FEET OF
**AMENITIES
FOR
EVERYONE**

SOCIAL & ENTERTAINMENT AMENITIES

PARK LOUNGE

The soaring Park Lounge by Katherine Newman Design is a multipurpose grand salon that rivals the best venues in New York City. Enjoy coffee in the morning or a drink at night at the custom bar. Relax with friends at the signature fireplace, or bring your laptop to get some work done at the most comfortable office in town. The triple-height space features backlit etched glass, custom-stained wood, imported stone, and a luminous installation of nearly 100 hanging glass globes. The experience extends outdoors through glass doors that lead onto the vast landscaped terrace that wraps the entire ninth floor and overlooks Willoughby Square Park.



PARK BAR

A 35-foot-tall backlit glass installation creates the most dramatic back bar in the city.

TERRACE SALON

Perfectly crafted conversation spaces offer garden vistas.

FIRESIDE RETREAT

Unwind and kick back after a day in the city.

WORK SPACE

Blurring the line between work and play.



PARK BAR

Brooklyn brews, refreshing varietals, and light fare can be served in a dramatic setting. Stocked with beer and wine, the bar can be reserved for private events where cocktails can also be served.

FIRESIDE COCKTAILS

The Park Lounge is designed to offer multiple seating areas, ideal for relaxation or entertaining friends and guests. It may be the grandest living room in New York City.



A DESK LIKE NO OTHER

The best coworking space in Brooklyn. Nestled between the signature fireplace and the floor-to-ceiling glass walls overlooking the landscaped terrace, the work space seating area benefits from multiple charging stations and high-speed Wi-Fi.



CULINARY AMENITIES

CHEF'S KITCHEN

Channel your culinary skills by taking control of the multiple cooktops and ovens, or enjoy watching a pro from the most coveted seat in town. This exalted space is centered on an exhibition kitchen framed by metalwork and stone accents illuminated by custom floating pendants.



CULINARY AMENITIES

WINE LIBRARY

A sanctuary for all oenophiles, this rich space is defined by custom millwork framing the dramatically illuminated wine cellars reserved exclusively for residents. Ideal for informal entertaining, the tasting table overlooks floor-to-ceiling glass doors that open onto the Retreat, an outdoor forest grove with seating areas and views of the skyline.



OUTDOOR GRILLS & DINING



FIRE PIT



LANDSCAPED TERRACE DINING AL FRESCO

From the warmth of the fire pit to the aromas of the grills, the terrace is designed to stimulate the senses. Socialize at the Terrace Bar, find romance at the Retreat, or escape to the Garden Room for privacy. Wrapping the entire ninth floor, the terrace offers a wealth of options for date night or connecting with a group of friends.

PLAYFUL AMENITIES

GAME ROOM

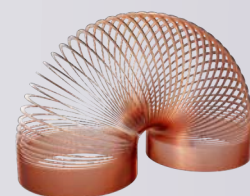
Old school meets new school. Custom billiards, ping-pong, foosball, card tables, and classic arcade games coexist with a large screen connected to multiple gaming consoles. Immediately adjacent to the outdoor Terrace Bar and Putting Green, the Game Room is the ideal setting for the perfect girls, guys, or family night out.





PLAYFUL AMENITIES

CHILDREN'S PLAYROOM



Two stories of wonder and amusement. Forts, slides, toy cubbies, and reading nooks provide imaginative indoor play and entertainment. Outside, the Children's Forest Adventure beckons.

PLAYFUL AMENITIES

FOREST ADVENTURE



A creative expression by Mathews Nielsen Landscape Architects, a sizable element of the ninth-floor amenity terrace is configured as the ultimate outdoor children's playground. Enjoy a slide down from the two-story fort, let imagination roam in the topiary teepee, or splash in the sprayers. Child's play has never been so much fun!



FITNESS CENTER

Located on the eleventh-floor and encased in floor-to-ceiling glass, the state-of-the-art cardio and conditioning equipment is even more enjoyable in the stylish and bright surroundings. Mirror, metal, and white brick elements add a designer sensibility to the space. A separate room offers a dedicated area for stretching and private training.





—
HEALTH & WELLNESS

CLIMBING IN THE CLOUDS

Over 35 feet of altitude. Overlooking double-height windows, the rock climbing wall is as dramatic as it is challenging. The custom wood floors in this multipurpose studio can be used for yoga and mat exercises as well.

If you want to keep your feet on the ground, there are dedicated spin and Pilates studios across the hall and a squash/basketball court downstairs.



—
HEALTH & WELLNESS
INDOOR
POOL

The centerpiece of the restorative Spa is the 65-foot-long saltwater pool. Dramatically clad in beautifully veined imported stone, the spa offers comfortable lounge furniture and a separate oversized hot tub. An infrared sauna and separate men's and women's steam and locker rooms complete the spa experience.



—
ABOVE IT ALL

ROOFTOP RETREAT

Resort living reaches new heights at the highest residential infinity pool in the Western Hemisphere. Featuring unobstructed views of the New York skyline and waterways from over 600 feet, this elevated escape also includes dedicated areas for sunbathing, outdoor showers, al fresco dining, and outdoor screenings for movies under the stars.



TRANSIT

EVERYWHERE YOU WANT TO GO

Own the advantage of living above Brooklyn's most essential transit hub — only one stop from Manhattan and with convenient access to 11 subway lines. All the best neighborhoods are at your front door, including Downtown Brooklyn, Brooklyn Heights, Park Slope, Boerum Hill, and Fort Greene.

DEKALB AVENUE STATION

B Q R

JAY STREET-METRO TECH

A C F R

HOYT-SCHERMERHORN STATION

A C G

HOYT STREET STATION

2 3

NEVINS STREET STATION

2 3 4 5

ATLANTIC AVENUE-BARCLAYS CENTER

B D N Q 2 3 4 5



BOROUGH HALL

2 3 4 5

CITY POINT

EVERYWHERE YOU WANT TO BE

Brooklyn Point is the final addition and only opportunity to own at City Point. Designed to be a retail and epicurean "town center," Brooklyn Point gives residents the unique advantage of having immediate access to a wealth of lifestyle, retail, dining, and entertainment destinations under one roof.



TRADER JOE'S



flying tiger
copenhagen

Century 21



CRAFT + CARRY



FORTINA PIZZA



CRAFT + CARRY



CAFE D'AVIGNON



DEKALB MARKET



FORTINA PIZZA



CAFÉ D'AVIGNON



FLETCHER'S BBQ



KATZ'S DELI



JIANBING



KATZ'S DELI



DAIGO HAND ROLL



AMPLE HILL'S CREAMERY



EIGHT TURN CREPE



HANA NOODLES



CAFÉ D'AVIGNON



KOTTI BERLINER

DEKALB MARKET

New York City's best food hall is just downstairs. DeKalb Market Hall is a carefully curated culinary center of over 40 diverse food vendors, restaurants, cocktail bars, and a flagship Trader Joe's emporium. Brooklyn's largest market hall features New York's most recognizable eateries, including the first expansion of the landmark Katz's Deli established on Manhattan's Lower East Side.

- AMPLE HILLS CREAMERY
- ANDREW'S CLASSIC BROOKLYN BAGELS
- AREPA LADY
- BELLE CHEESE
- BK JANI
- BK JUICER
- BREAD & SPREAD
- BUNKER
- BUNSMITH
- CAFÉ D'AVIGNON
- CRAFT + CARRY
- CUZIN'S DUZIN
- DAIGO HAND ROLL BAR
- DEKALB TACO
- DONER KEBAB
- DULCINEA
- EIGHT TURN CREPE
- FLETCHER'S BARBECUE
- FORAGERS BUTCHER
- FORAGERS MARKET
- FORAGERS ROTISSERIE
- FORCELLA
- FULTON LANDING SEAFOOD MARKET
- FULTON LANDING SEAFOOD
- GUSS' PICKLES
- HANA NOODLES
- HARD TIMES SUNDAES
- HOME FRITE
- JIANBING COMPANY
- KATZ'S DELI
- KOTTI BERLINER
- LIKKLE MORE
- LIONI HEROES
- NOBLETREE COFFEE
- PAELLA SHACK
- PIEROGI BOYS
- POP CAKE SHOP
- STEVE'S AUTHENTIC KEY LIME PIES
- TWO TABLESPOONS
- WIKI WIKI
- WILMA JEAN

Vendors are subject to change.

AROUND

BROOKLYN POINT

GROCERY & MARKETS

- Brooklyn Fare
- BKLYN Larder
- DeKalb Market
- Foragers Market
- Fort Greene Farmer's Market
- Prospect Park Farmer's Market
- The Greene Grape
- Trader Joe's
- Union Market
- Whole Foods
- Whole Foods 365

FITNESS & WELLNESS

- Brooklyn Boulders
- Dumbo Boulders
- Equinox
- Gotham Archery
- Orangetheory Fitness
- Pure Barre
- Soul Cycle
- Yoga Works

PARKS

- Brooklyn Bridge Park
- Cadman Plaza Park
- Commodore Barry Park
- Fort Greene Park
- Prospect Park
- Willoughby Square Park

CULTURAL & ENTERTAINMENT

- Alamo Drafthouse
- Barclays Center
- Borough Hall
- BRIC House
- Brooklyn Academy of Music
- Brooklyn Flea
- Brooklyn Historical Society
- Jane's Carousel
- Mark Morris Dance Center
- New York Transit Museum
- St. Ann's Warehouse
- The Royal Palms Shuffleboard Club
- Theater for a New Audience
- Urban Glass

SHOPPING

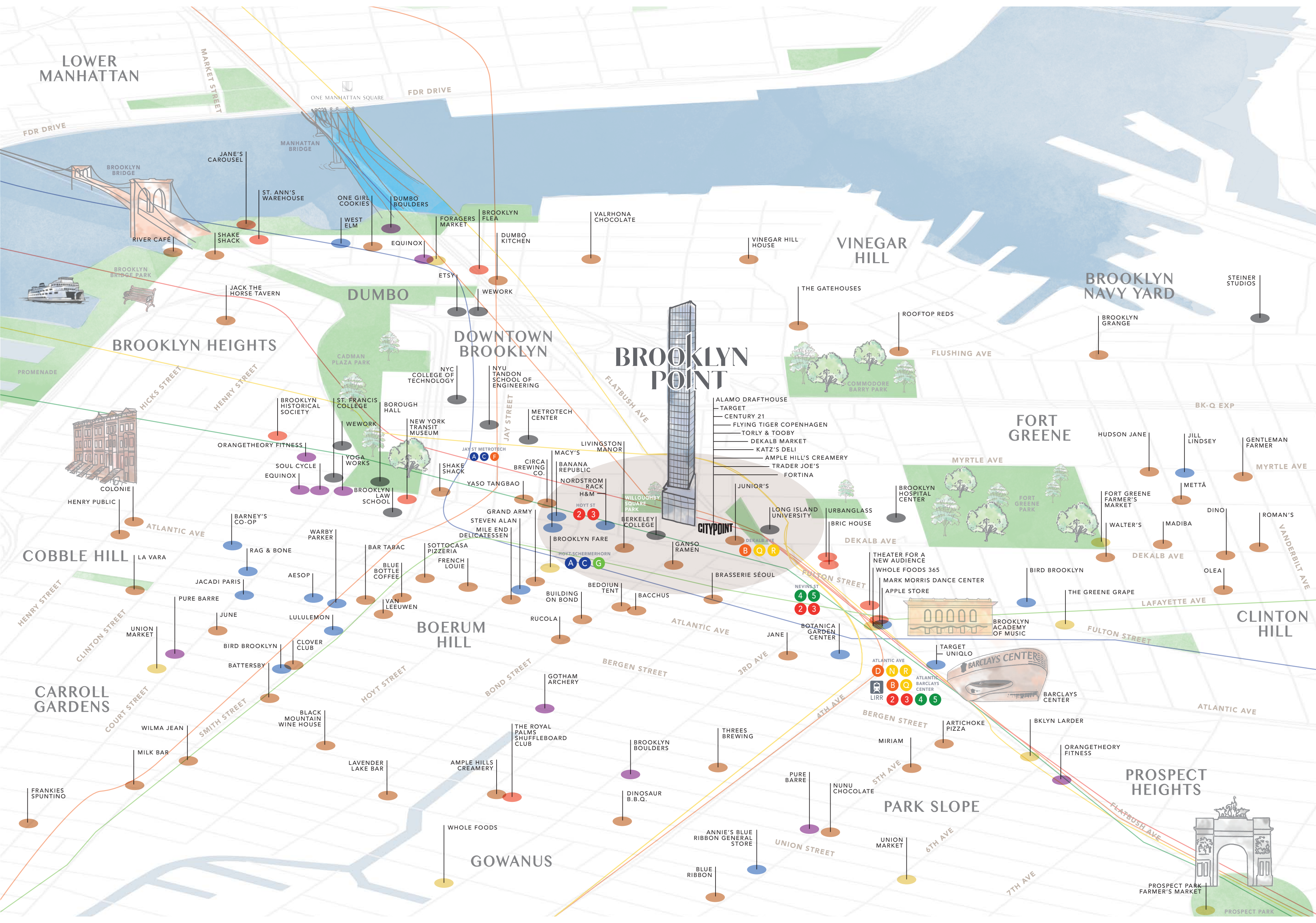
- Aesop
- Annie's Blue Ribbon General Store
- Apple Store
- Barney's CO-OP
- Banana Republic
- Bird Brooklyn
- Botanica Garden Center
- Century 21
- Flying Tiger Copenhagen
- H&M
- Jacadi Paris
- Jill Lindsey
- Lululemon
- Macy's
- Nordstrom Rack
- Rag & Bone
- Steven Alan
- Target
- Torly & Tooby
- Uniqlo
- Warby Parker
- West Elm

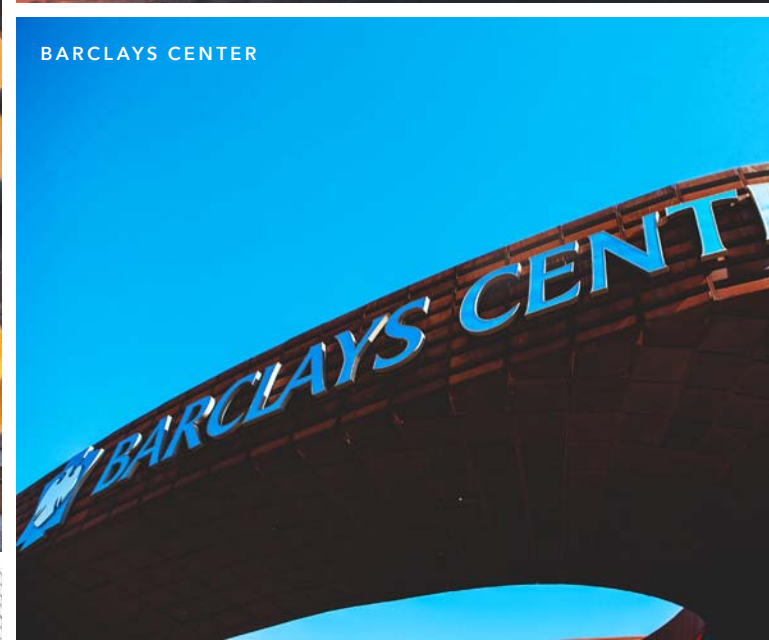
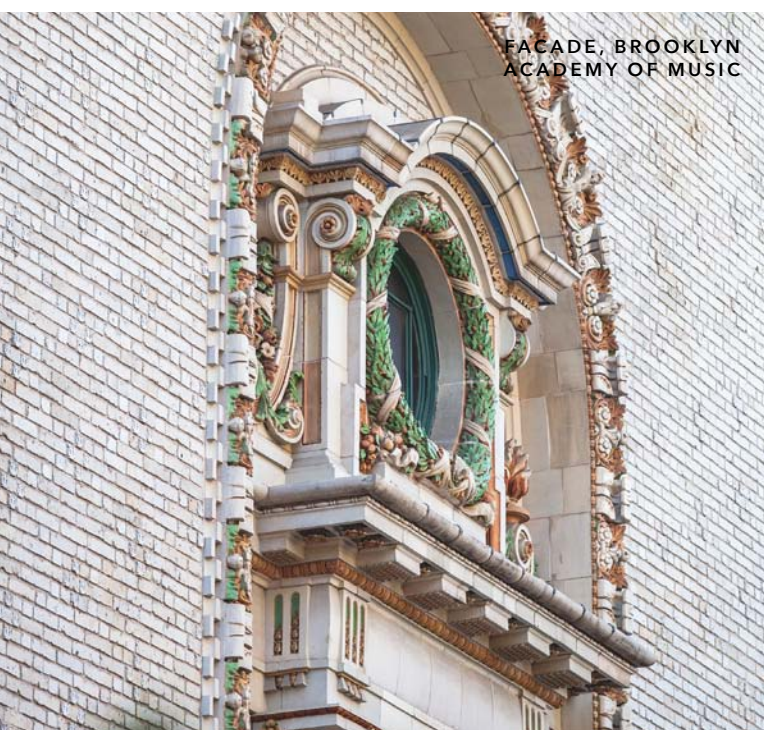
INSTITUTIONS & OTHER

- Berkeley College
- Borough Hall
- Brooklyn Hospital Center
- Brooklyn Law School
- Brooklyn Navy Yard
- Civic Center
- Etsy
- Long Island University
- MetroTech Center
- NYC College of Technology
- NYU Tandon School of Engineering
- Pratt Institute
- St. Francis College
- St. Joseph's College
- Steiner Studios
- WeWork

RESTAURANTS & BARS

- Ample Hills Creamery
- Bacchus Bistrot a Vins
- Bar Tabac
- Bedouin Tent
- Black Mountain Wine House
- Blue Bottle Coffee
- Blue Ribbon
- Brasserie Séoul
- Brooklyn Grange
- Building on Bond
- Circa Brewing Co.
- Clover Club
- Colonie
- Dino
- Dinosaur B.B.Q.
- Dumbo Kitchen
- Fortina Pizza
- Frankies Spuntino
- French Louie
- Ganso Ramen
- Gentlemen Farmer
- Grand Army
- Han Dynasty
- Henry Public
- Hudson Jane
- Jack the Horse Tavern
- Jane
- June
- Junior's
- Katz's Deli
- La Vara
- Lavender Lake
- Livingston Manor
- Madiba
- Metta
- Mile End Delicatessen
- Milk Bar
- Miriam
- NUNU Chocolate
- Olea
- One Girl Cookies
- Roman's
- Rooftop Reds
- Rucola
- Shake Shack
- Sottocasa Pizzeria
- The Gatehouses
- The River Café
- Threes Brewing
- Valrhona Chocolate
- Van Leeuwen
- Vinegar Hill House
- Walter's
- Wilma Jean
- Yaso Tangbao





FEATURES

EXTELL QUALITY

- Custom glass and metal curtain wall
- Imported stone and custom millwork
- 5" wide flat-cut light- or dark-stained white oak flooring
- Washer and dryer in all residences
- Integrated USB electrical outlets in select locations
- Central HVAC system
- Ceiling height ranging from 9' to 11'

EXTELL CHOICE

KITCHENS

- Light- or dark-stained millwork with varying stains and grain directions
- White quartz countertops
- Satin copper hardware
- Waterworks custom faucet with copper finish
- Premium Miele appliance package including:
 - Integrated refrigerator
 - Integrated dishwasher
 - Gas cooktop
 - Convection oven
 - Speed oven
- Miele built-in whole-bean coffee system in select residences
- Integrated Sub-Zero wine refrigerator in select residences

BATHROOMS

MASTER

- Light stone mosaic feature walls
- Custom-stained white oak vanity with marble countertops
- Waterworks custom satin copper fixtures
- Custom cabinetry hardware
- Custom pendant light
- Medicine cabinet with back-painted glass
- Satin copper illuminated makeup mirror
- Quartz floor with radiant heating

SECONDARY

- Dark stone mosaic feature walls
- Custom-stained white oak vanity with quartz countertops
- Waterworks custom satin copper fixtures
- Custom cabinetry hardware
- Custom pendant light
- Medicine cabinet with back-painted glass and integrated outlets
- Waterworks "Classic" tub

TERTIARY

- Custom back-painted glass tile feature walls
- Custom-stained white oak vanity with marble countertops
- Waterworks custom satin copper fixtures
- Custom cabinetry hardware
- Custom pendant light
- Medicine cabinet with back-painted glass and integrated outlets

& FINISHES

EXCLUSIVE AMENITIES

HEALTH

SPORTS

- State-of-the-art Fitness Center including:
 - Weight & Cardio Training Rooms
 - Rock Climbing / Yoga Studio
 - Cycling Studio
 - Pilates Studio
- Squash / Basketball Court
- Fitness Classes

WELLNESS

SPA

- 65' Indoor Saltwater Swimming Pool
- Hot Tub
- Infrared Sauna
- Men's & Women's Steam Rooms
- Men's & Women's Locker Rooms

ENTERTAINMENT & LEISURE

- The Park Lounge:
 - 35' ceiling heights with wraparound glass walls opening onto the landscaped terrace
 - Designed for entertaining with a bar and signature fireplace
 - Lounge and coworking areas
- Chef's Demonstration Kitchen
- Game Lounge
- Screening & Performance Room
- Wine Room
- Private Study
- Indoor Children's Playroom

OUTDOOR EXPERIENCES BY MATHEWS NIELSEN LANDSCAPE ARCHITECTS

LANDSCAPED TERRACE

- Al Fresco Kitchen & Dining Areas
- Putting Green
- Fire Pit and Lounge
- Terrace Bar
- Forest Adventure — Children's Play Area

ROOFTOP RETREAT

- Tallest Residential Infinity Pool in the Western Hemisphere
- Manhattan Skyline & Waterway Views
- Sun Deck
- Al Fresco Dining Area
- Outdoor Movie Screening
- Changing Rooms

SERVICES & CONVENIENCES



Doorman



24-Hour Concierge



Refrigerated Delivery Storage



Package Delivery Room



Stroller Valet



Dry-Cleaning Valet



Bicycle Storage



Pet Spa



Storage

THE NEW CENTER OF BROOKLYN

SUBWAY ACCESS

Convenient access to over 11 subway lines including the 2, 3, B, Q, R, A, C, G, F, 4, and 5 – offering a quick commute to Manhattan

WILLOUGHBY SQUARE PARK

Brooklyn Point will be directly adjacent to this new one-acre park with parking below

CITY POINT

Brooklyn Point is ideally located at City Point with over 600,000 square feet of retail and dining options

EXTELL

DEVELOPMENT COMPANY

Extell is a full-service development company driven by an internal team of talented real estate professionals whose combined breadth of experience includes all areas of real estate development. Clear communication and proficient execution enable us to successfully acquire, finance, develop, market, and manage the most sophisticated urban development projects.

The Extell name is derived from two words: Excellence and Intelligence. These two virtues are shared by each member of our team and drive our passion for excellence and unwavering commitment to the long-term success of each and every project. The Extell success story includes developing some of the world's most elevated residences and redefining luxury development throughout the City. Our portfolio continues to expand throughout New York and other premier markets across the nation.

MARKETING AND SALES

Extell Marketing Group manages all sales and leasing efforts in Extell's portfolio of luxury properties. By overseeing this multifaceted and complex process internally, we ensure the most professional, service-oriented environment, providing seamless, turnkey solutions. Working together with the development, design, and sales departments, we guarantee an efficient transaction between all parties.

MANAGEMENT COMPANY

Extell has developed a sophisticated and intuitive management team to reinforce the commitment to maintain the quality of each property that it develops. The management portfolio includes some of New York's most recognized high-end residential and commercial addresses.



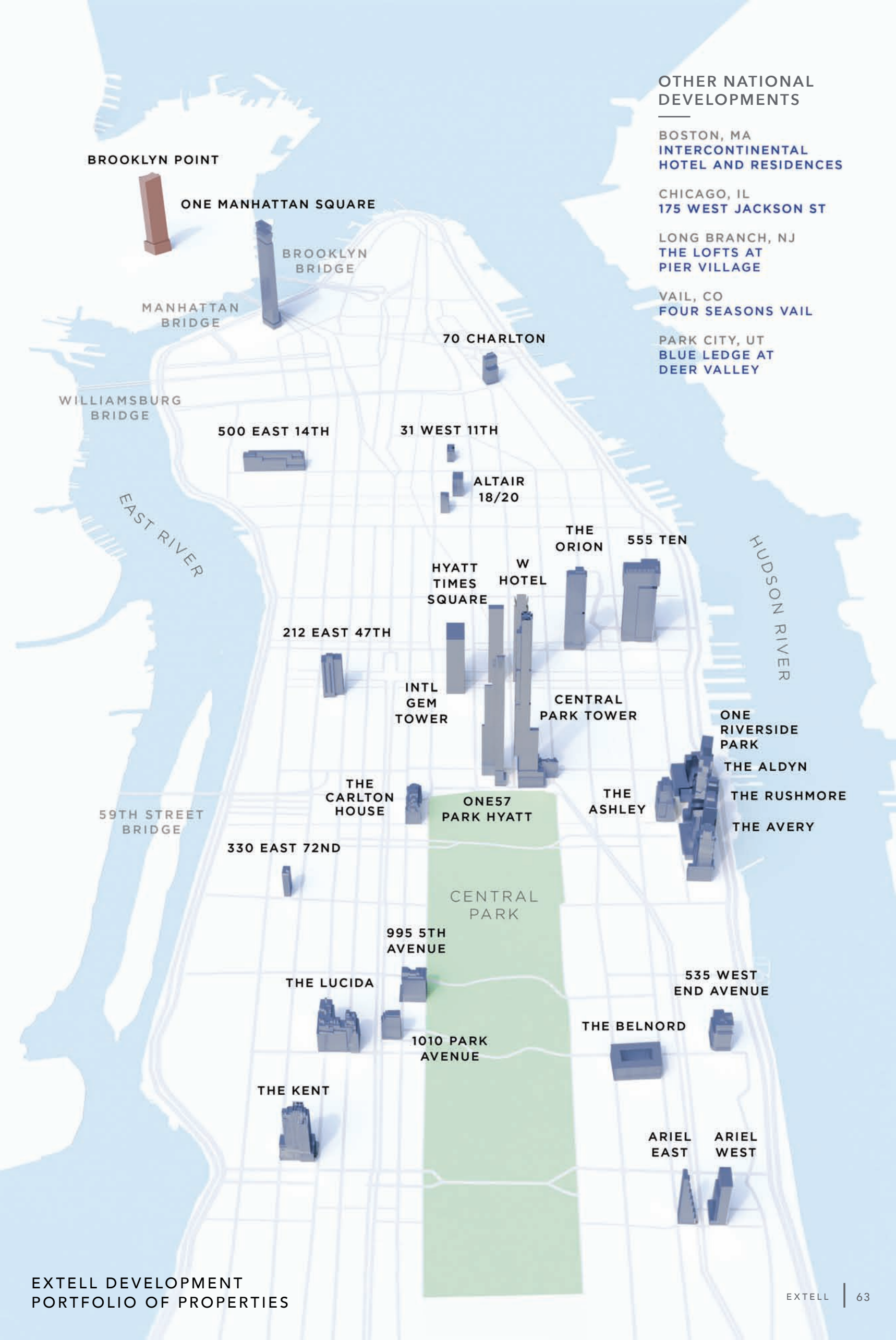
THE LUCIDA



ONE
MANHATTAN
SQUARE



ONE57



Please Contact:

Mr. Bill Wren

Real Estate Sales Agent

Business Email: bill.wren@wrencapital.me

SMS / Cell / WhatsApp No.: + 86 - 186 5206 1897

WeChat ID: billwren